



Report of the Head of Corporate Policy

Purpose of the Report

- 1 The purpose of this report is to provide an update of 2006/07 year end performance for the authority's corporate priorities relevant to our Corporate Aim, Developing Lifelong Learning.
- 2 The 2006/07 end of year performance for indicators aligned to Developing Lifelong Learning are available in Appendix A .
- 3 To gain maximum impact of performance management intelligence from Performance Plus, the system requires tolerances and milestones to be set for targets. A zero tolerance is applied alongside graduated milestones, where appropriate, up to the year-end 2006/07.

Key to Tables

- increasing, improved performance
- decreasing, improved performance
- decreasing, deteriorating performance
- increasing, deteriorating performance
- no change

- performance worse than target
- performance better than target by less than 10%
- performance better than target by 10% or more

Key to Quartile Positions

- bottom quartile
- third quartile
- second quartile
- top quartile

Key to Graphs

- Actual
- worse than target performance
- better than target performance
- Projection - 3 data points
- Projection - 9 data points

Priorities for Improvement

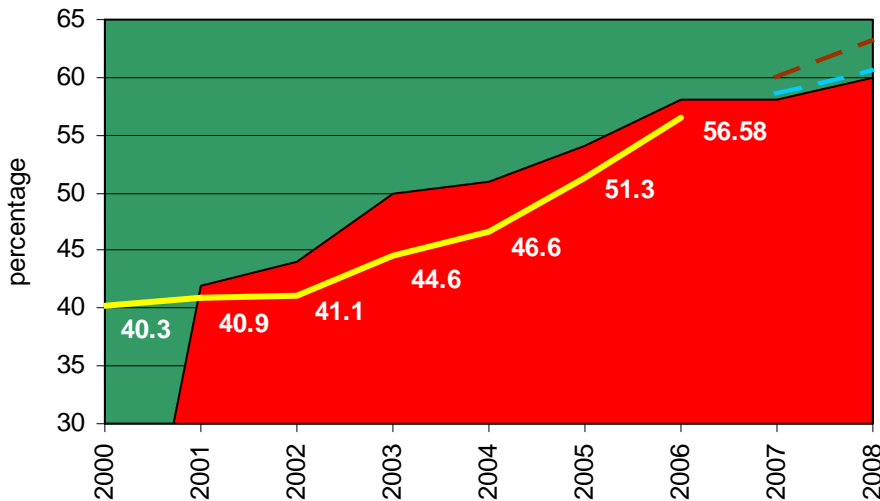
- 4 There is one priority area for improvement aligned to our Corporate Aim, Developing Lifelong Learning.

Improving Educational Attainment

Within this theme there are 3 outcomes that have been identified as areas we want to improve.

Better educational attainment at Key Stage 4 – to know if we are succeeding at this we are measuring:

- **BV 38 – 5 or more A*-C GCSE.**

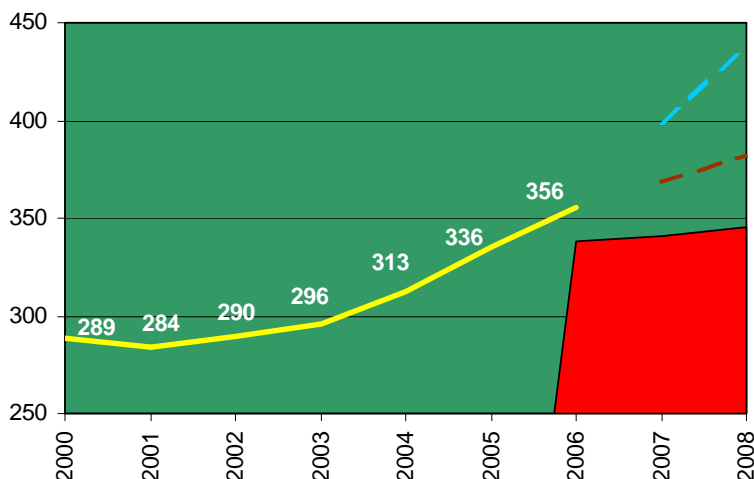


Quartile Position	
2003/04	2004/05
Actual	
56.58	✓
Target	
58.00	▲

Educational attainment is one of the biggest challenges for the County. Improvement in GCSE results for 2006 has been well above the national average and there has been improvement across all measures with pupils of all backgrounds achieving more highly than ever before.

The final outturn for children achieving 5 or more A*-C GCSEs in the summer 2006 examinations, and our BVPI for 2006/07, is 56.58%. Despite not achieving the DFES (Department for Education and Skills) target, performance has continued its improving trend, presently 5.3 percentage points better than 2005 results and 16.28 percentage points better than the 2000 results. More importantly, for the first time in Durham's history, in terms of GCSE results, the County has matched the national average for maintained schools. With regard to GCSE results, Durham County Council is now the 16th most improved local authority this year.

- **LAA C&YP 06a – Average number of points at key stage 4 (stretch target).**





Actual	
355.50	✓
Target	
338.00	●

The average number of points at key stage 4 has improved further to 355.5. Performance for 2006/07 is more than 5% ahead of the LAA stretch target for this year.

Better educational attainment of children looked after at Key Stage 4 – to know if we are succeeding at this we are measuring:

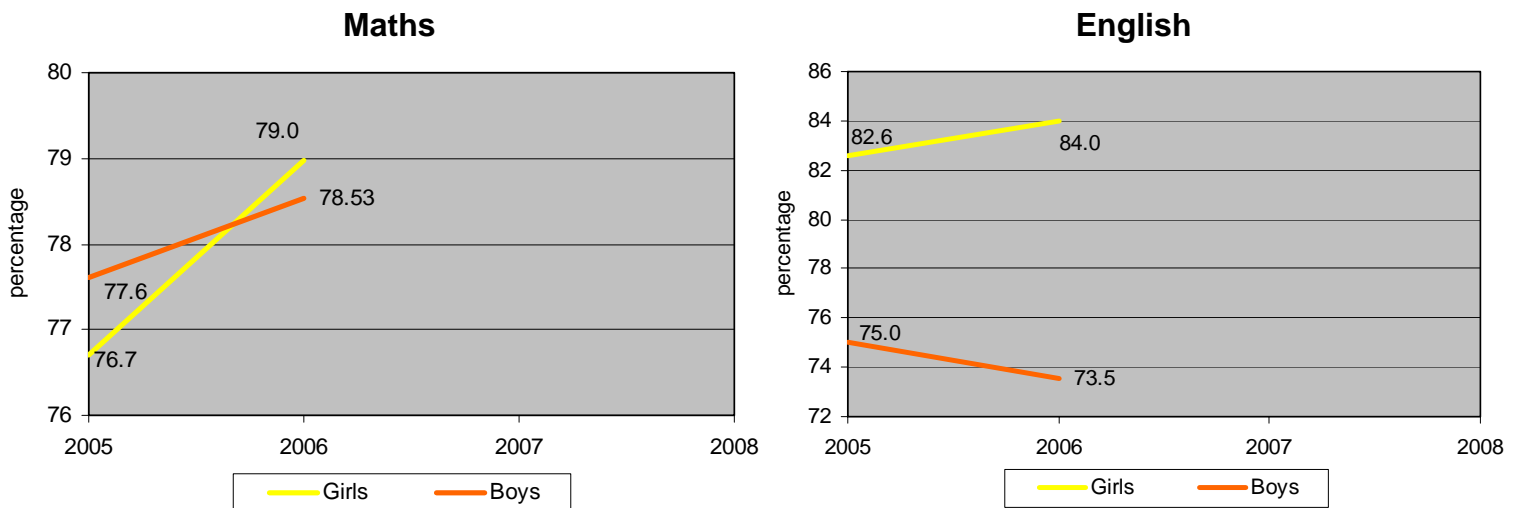
- **PFI 02b - % children leaving care with 5 or more A*-C GCSE.**

Actual		Target	
8.50		5.00	

Final performance for this indicator has improved further to 8.5%, well ahead of the 5% target for this group for 2006/07.

Narrowing the gap between boys and girls at Key Stage 2 – to know if we are succeeding at this we are measuring:

- PFI 02c BV040a – Achievement of girls / boys at Level 4, Keystage 2 Maths and English



In 2006, the gap between girls and boys for KS2 Maths is 0.47 percentage points. Girls are out-performing boys by 10.51 percentage points at KS2 English.

Boys' underachievement is a national issue and an area requiring the implementation of improvement strategies across all key stages. We will continue to monitor performance, provide targeted intervention, share good practice and support those schools where the underachievement of boys is an issue.

Recommendations

That Corporate Scrutiny Sub-Committee Members:

- (i) note the contents of this report
- (ii) agree to receiving subsequent quarterly performance progress reports

Contact: Debra Kitching

Tel: 0191 383 4186

